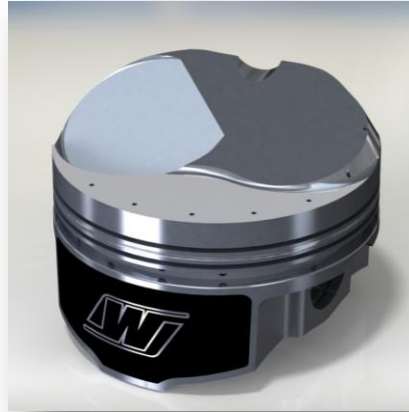


# New Product

## Big Block Chevy 396/427/ 454/ 502 Domed Series



### Features

- Dedicated forging
- 2618 Material
- Vertical gas ports
- Anti-detonation & pressure seal grooves
- ArmorGlide® skirt coating
- Experience

### Benefits

- Designed for high performance street and drag applications- Light weight and superior strength
- Aerospace alloy for superior strength/weight ratio
- Improve ring seal and aid in quicker seating of the ring
- Help control and distribute combustion gases between the compression rings.
- Improved wear and friction reduction
- Over 70 years as the industry leader in forged piston technology

Kit includes (8) pistons, (8) pins, (8) locks, and (8) groove lock spacers- where applicable..

Retail pricing (USD): Kit: \$894.37

## Chevrolet • 454 Dome

### BBC • Dome • 396/ 427/ 454/ 502 Series

*Pistons designed for high performance Street / Drag*

- Vertical Gas Ports
- ArmorGlide™ Skirt Coating
- 2618 High Strength Alloy
- .310" Top Ring Land Thickness
- Valve Pocket: Int. .320" Exh. +.120"
- C/R @ 0 deck with .040" gasket
- .180" Wall Tool Steel Pins & Double Spirolox®
- Anti-detonation & pressure seal grooves
- Pin Fitting

Kit Part #	Bore	Comp. Ht.	Stroke	Rod	0 Deck at	Std. Deck Ht.	Avg. Wt.	Volume	Compression Ratio At:				Pin Part # (Included)	Std. Tension Rings 1/16, 1/16, 3/16 (sold separately)	Skirt Type
									96cc	102cc	118cc	121cc			
K0239A3	4.280														
K0239A6	4.310	1.760	3.766	6.135	9.780	9.800		34cc	12.6	12.0	10.0	9.9	S460 .990 x 2.930	W100F8-4280-5	Slab Sided
K0239A7	4.320													W100F8-4310-5	
K0239A100	4.350													W100F8-4320-5	
K0242A3	4.280	1.395	4.000	6.385	9.780	9.800		46cc	15.7	14.5	12.0	11.7	S462 .990 x 2.930	W100F8-4350-5	Slab Sided
K0242A6	4.310													W100F8-4280-5	
K0242A7	4.320													W100F8-4310-5	
K0242A100	4.350													W100F8-4320-5	
K0243A3	4.280	1.270	4.250	6.385	9.780	9.800		25cc*	12.9	12.1	10.5	10.2	S460 .990 x 2.930	W100F8-4350-5	Slab Sided
K0243A6	4.310													W100F8-4280-5	
K0243A7	4.320													W100F8-4310-5	
K0243A100	4.350													W100F8-4320-5	
K0245A5	4.500	1.270	4.250	6.385	9.780	9.800		15cc	12.6	11.9	10.5	10.2	S762 .990 x 2.930	W100F8-4600-5	Slab Sided
K0245A3	4.530													W100F8-4630-5	
K0245A6	4.560													W100F8-4350-5	
K0245A100	4.600													W100F8-4600-5	

\* dome is a closed chamber dome design

**Order at Wiseco.com or call today 800-321-1364!**