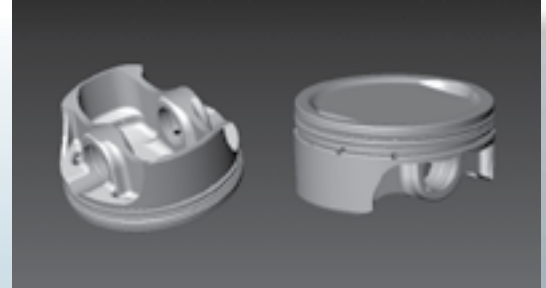




NEW! Twin Cam 96 2007
1691cc Big Bore Kit (103 cu. in.)

(Also fits Twin Cam 88 1999-06 with 4 3/8" Stroker Crank)



- Recalibration required.
- Cylinder boring required.
- Includes: Forged pistons, rings, retainer clips & chrome piston pins.
- Gasket available as a separate component.
- Skirt coated.

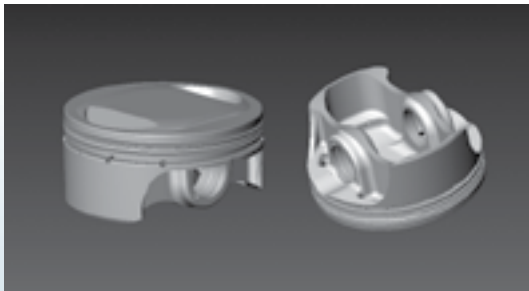
9:1 Compression • Reverse Dome

Hastings Ring Package: Top Ring .0472" • 2nd Ring .0472" • Oil Ring .118"

KIT PART NO. \$299.68 (D08971)	CC DISPL.	BORE	STROKE	REPL. PISTON \$149.84 (D0998)	REPL. RING SET \$27.95 (D7761)	REPL. RETAINER CLIP & PISTON PIN	GASKET KIT (Optional) \$115.63 (D8396)
K1751	1691cc	3.875"/STD		4916PS	3875XK	W5752	W5786
K1752	1695cc	3.880"/.005	4.375"	4916P005	3880XK	\$2.00 (D021)	
K1753	1700cc	3.885"/.010		4916P1	3885XK	S594 \$13.95 (D738)	

DOME SPECIFICATION
Valve pocket dimensions are measured from Deck Height.

Dome Volume: -11.0cc
Intake Pocket
Depth: -.213"
Diameter: 2.150"
Exhaust Pocket
Depth: -.213"
Diameter: 2.150"



NEW!

Twin Cam 96 2007
1691cc Big Bore Kit (103 cu. in.)

(Also fits Twin Cam 88 1999-06 with 4 3/8" Stroker Crank)

- Recalibration required.
- Cylinder boring required.
- Includes: Forged pistons, rings, retainer clips & chrome piston pins.
- Gasket available as a separate component.
- Skirt coated.

10.5:1 Compression • Reverse Dome

Hastings Ring Package: Top Ring .0472" • 2nd Ring .0472" • Oil Ring .118"

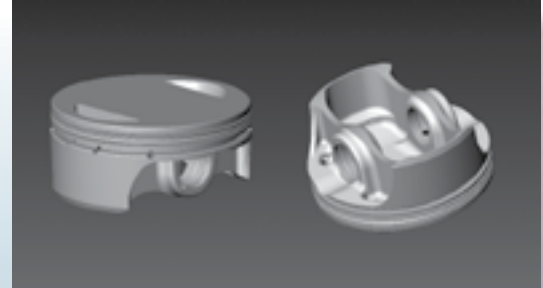
KIT PART NO. \$299.68 (D08971)	CC DISPL.	BORE	STROKE	REPL. PISTON \$149.84 (D0998)	REPL. RING SET \$27.95 (D7761)	REPL. RETAINER CLIP & PISTON PIN	GASKET KIT (Optional) \$115.63 (D8396)
K1754	1691cc	3.875"/STD		4917PS	3875XK	W5752	W5786
K1755	1695cc	3.880"/.005	4.375"	4917P005	3880XK	\$2.00 (D021)	
K1756	1700cc	3.885"/.010		4917P5	3885XK	S594 \$13.95 (D738)	

DOME SPECIFICATION
Valve pocket dimensions are measured from Deck Height.

Dome Volume: -5.5cc
Intake Pocket
Depth: -.213"
Diameter: 2.150"
Exhaust Pocket
Depth: -.213"
Diameter: 2.150"

NEW! Twin Cam 96 2007
1802cc Big Bore Kit (110 cu. in.)

(Also fits Twin Cam 88 1999-06 with 4 3/8" Stroker Crank)



- Recalibration required.
- Big bore cylinders and case boring required.
- Includes: Forged pistons, rings, retainer clips & chrome piston pins.
- Gasket available as a separate component.
- Skirt coated.

10.5:1 Compression • Reverse Dome

Hastings Ring Package: Top Ring .0472" • 2nd Ring .0472" • Oil Ring .118"

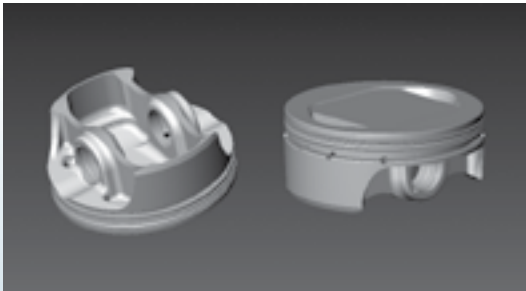
KIT PART NO. \$299.68 (D18971)	CC DISPL.	BORE	STROKE	REPL. PISTON \$149.84 (D0998)	REPL. RING SET \$38.59 (D4822)	REPL. RETAINER CLIP & PISTON PIN	GASKET KIT (Optional) \$66.10 (D6693)
K1757	1802cc	4.000"	4.375"	4918PS	4000GF	W5752 \$2.00 (D021) S594 \$13.95 (D738)	W6274

DOMESPECIFICATION
Valve pocket dimensions are measured from Deck Height.

Dome Volume: - 2.3cc
Intake Pocket
Depth: -.213"
Diameter: 2.150"
Exhaust Pocket
Depth: -.213"
Diameter: 2.150"

NEW! Twin Cam 96 2007
1971cc Big Bore Kit (117 cu. in.)

(Also fits Twin Cam 88 1999-06 with 4 3/8" Stroker Crank)



- Recalibration required.
- Big bore cylinders and case boring required.
- Includes: Forged pistons, rings, retainer clips & chrome piston pins.
- Gasket available as a separate component.
- Skirt coated.

10.5:1 Compression • Reverse Dome

Hastings Ring Package: Top Ring .0472" • 2nd Ring .0472" • Oil Ring .118"

KIT PART NO. \$299.68 (D08971)	CC DISPL.	BORE	STROKE	REPL. PISTON \$149.84 (D0998)	REPL. RING SET \$38.59 (D4822)	REPL. RETAINER CLIP & PISTON PIN	GASKET KIT (Optional)
K1758	1917cc	4.125"	4.375"	4919PS	4127GF	W5752 \$2.00 (D021) S594 \$13.95 (D738)	TBA

DOMESPECIFICATION
Valve pocket dimensions are measured from Deck Height.

Dome Volume: -5.0cc
Intake Pocket
Depth: -.213"
Diameter: 2.150"
Exhaust Pocket
Depth: -.213"
Diameter: 2.150"