



## 1340 Evo 3<sup>3/4</sup>" Big Bore Kit Stock Stroke 1984-99 (93.4 cu. in.)

### "SLEEPER SERIES"

Converts your stock cylinder into a Big Bore

Must use aftermarket engine case on 1990-95 models only

- Cases must be bored to accept big bore sleeves (3035FA).
- Includes: Forged pistons, rings, retainer clips & chrome piston pins.
- Complete top end gasket kit available as a separate component.



#### 9.5:1 Compression • Flat Top

#### Wiseco Ring Package: Top Ring .047" • 2nd Ring .057" • Oil Ring .158"

KIT PART NO. \$292.31 (D93571)	CC DISPL.	BORE	STROKE	REPL. PISTON \$146.16 (D9678)	REPL. RING SET \$27.95 (D7761)	REPL. RETAINER CLIP & PISTON PIN	GASKET KIT (Optional) \$110.14 (D8066)
<b>K1749</b>	1530cc	3.740"/STD	4.250"	4661PS	3740XH	W5731 \$2.00 (D021) S572 \$13.95 (D738)	1984-91: W6380 1992-99: W6379

DOME SPECIFICATION <i>Valve pocket dimensions are measured from Deck Height.</i>	
Dome Volume:	+9.5cc
Intake Pocket	
Depth:	-.189"
Diameter:	2.000"
Exhaust Pocket	
Depth:	-.189"
Diameter:	2.000"

#### 1340 Big Bore Sleeves

Wiseco Part No: **3035FA** \$106.01 (D1636)



## Twin Cam 88 1999-06 (88 cu. in.) Hi-Compression Standard Bore Kits

- Screamin' Eagle ignition module required.
- Includes: Forged pistons, rings, retainer clips & chrome piston pins.
- Complete top end gasket kit available as a separate component.
- Skirt coated.

#### 10.5:1 Compression • Domed

#### Wiseco Ring Package: Top Ring 1.5mm • 2nd Ring 1.5mm • Oil Ring 3.0mm

KIT PART NO. \$294.64 (D79671)	CC DISPL.	BORE	STROKE	REPL. PISTON \$147.32 (D9388)	REPL. RING SET \$27.95 (D7761)	REPL. RETAINER CLIP & PISTON PIN	GASKET KIT (Optional) \$119.18 (D1517)
<b>K1726</b>	1448cc	3.750"/STD	4.000"	4756PS	3750XP	W5752	W6004
<b>K1728</b>	1456cc	3.760"/.010		4756P1	3760XP	\$2.00 (D021)	
<b>K1729</b>	1463cc	3.770"/.020		4756P2	3770XP	S594	
<b>K1730</b>	1471cc	3.780"/.030		4756P3	3780XP	\$13.95 (D738)	

DOME SPECIFICATION <i>Valve pocket dimensions are measured from Deck Height.</i>	
Dome Volume:	+19.5cc
Intake Pocket	
Depth:	-.150"
Diameter:	2.000"
Exhaust Pocket	
Depth:	-.150"
Diameter:	2.000"

## Twin Cam 88 1999-06 1550cc Big Bore Kits (95 cu. in.)



- Ignition module change not required.
- Cylinder boring required.
- Includes: Forged pistons, rings, retainer clips, chrome piston pins & complete top end gasket kit.
- Skirt coated.

### 9:1 Compression • Flat Top

#### Hastings Ring Package: Top Ring .059" • 2nd Ring .059" • Oil Ring .098"

KIT PART NO. \$410.26 (D61642)	CC DISPL.	BORE	STROKE	REPL. PISTON \$147.32 (D9388)	REPL. RING SET \$24.95 (D7941)	REPL. RETAINER CLIP & PISTON PIN	GASKET KIT \$115.63 (D8396)
<b>K1719</b>	1546cc	3.875"/STD	4.000"	4688PS	3875XK	W5752	W5786
<b>K1720</b>	1550cc	3.880"/.005		4688P05	3880XK	\$2.00 (D021)	
<b>K1721</b>	1554cc	3.885"/.010		4688P1	3885XK	S594	
<b>K1722</b>	1562cc	3.895"/.020		4688P2	3895XK	\$13.95 (D738)	

**DOMESPECIFICATION**  
*Valve pocket dimensions are measured from Deck Height.*

Dome Volume:	-2.0cc
Intake Pocket	
Depth:	-.161"
Diameter:	2.000"
Exhaust Pocket	
Depth:	-.158"
Diameter:	2.000"



## Twin Cam 88 1999-06 1550cc Big Bore Kits (95 cu. in.)

- Screamin' Eagle ignition module required.
- Cylinder boring required.
- Includes: Forged pistons, rings, retainer clips, chrome piston pins & complete top end gasket kit.
- Skirt coated.

### 10.5:1 Compression • Domed

#### Hastings Ring Package: Top Ring .059" • 2nd Ring .059" • Oil Ring .098"

KIT PART NO. \$410.26 (D61642)	CC DISPL.	BORE	STROKE	REPL. PISTON \$147.32 (D9388)	REPL. RING SET \$24.95 (D7941)	REPL. RETAINER CLIP & PISTON PIN	GASKET KIT \$115.63 (D8396)
<b>K1709</b>	1546cc	3.875"/STD	4.000"	4678PS	3875XK	W5752	W5786
<b>K1710</b>	1550cc	3.880"/.005		4678P05	3880XK	\$2.00 (D021)	
<b>K1711</b>	1554cc	3.885"/.010		4678P1	3885XK		
<b>K1712</b>	1562cc	3.895"/.020		4678P2	3895XK	S594	
<b>K1713</b>	1570cc	3.905"/.030		4678P3	3905XK	\$13.95 (D738)	

**DOMESPECIFICATION**  
*Valve pocket dimensions are measured from Deck Height.*

Dome Volume:	+15.0cc
Intake Pocket	
Depth:	-.161"
Diameter:	2.000"
Exhaust Pocket	
Depth:	-.158"
Diameter:	2.000"



## Twin Cam 88 1999-06 1650cc Big Bore Kit (100 cu. in.)

### "SLEEPER SERIES"

Converts your stock cylinder into a Big Bore

- Screamin' Eagle ignition module required.
- Big bore cylinder or cylinder resleeving required.
- Cases must be bored to accept big bore cylinder.
- Includes: Forged pistons, rings, retainer clips, chrome piston pins & complete Top End gasket kit.



10:1 Compression • Domed • Skirt Coated

**Hastings Ring Package: Top Ring .047" • 2nd Ring .047" • Oil Ring .118"**

KIT PART NO. \$361.46 (D88612)	CC DISPL.	BORE	STROKE	REPL. PISTON \$149.84 (D0998)	REPL. RING SET \$38.59 (D4822)	REPL. RETAINER CLIP & PISTON PIN \$2.00 (D021) \$594 \$13.95 (D738)	GASKET KIT \$66.10 (D6693)
<b>K1744</b>	1650cc	4.000"/STD	4.000"	4845PS	4000GF	W5752 \$2.00 (D021) \$594 \$13.95 (D738)	W6274

DOME SPECIFICATION <i>Valve pocket dimensions are measured from Deck Height.</i>	
Dome Volume:	+5.6cc
Intake Pocket	
Depth:	-.183"
Diameter:	2.000"
Exhaust Pocket	
Depth:	-.183"
Diameter:	2.000"

**Twin Cam 88 Big Bore Sleeves**  
Wiseco Part No: **3209FA** \$106.01 (D1636)



**NEW!**

## Twin Cam 88 1999-06 1650cc Big Bore Kit (100 cu. in.)

### "SLEEPER SERIES"

Converts your stock cylinder into a Big Bore

- Screamin' Eagle ignition module required.
- Big bore cylinders or resleeving required.
- Cases must be bored to accept big bore cylinders.
- Includes: Forged pistons, rings, retainer clips & chrome piston pins.
- Gasket available as a separate component.

10.5:1 Compression • Domed • Skirt Coated

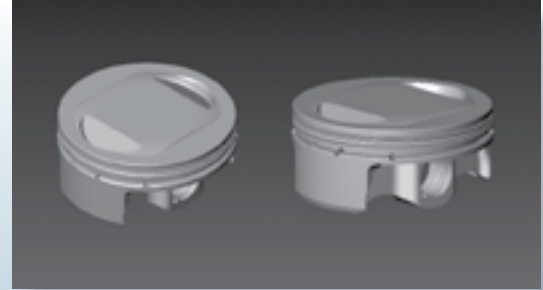
**Hastings Ring Package: Top Ring .0472" • 2nd Ring .0472" • Oil Ring .118"**

KIT PART NO. \$299.68 (D08971)	CC DISPL.	BORE	STROKE	REPL. PISTON	REPL. RING SET \$38.59 (D4822)	REPL. RETAINER CLIP & PISTON PIN \$2.00 (D021) \$594 \$13.95 (D738)	GASKET KIT (Optional) \$66.10 (D6693)
<b>TBA</b>	1650cc	4.000"/STD	4.000"	TBA	4000GF	W5752 \$2.00 (D021) \$594 \$13.95 (D738)	W6274

DOME SPECIFICATION <i>Valve pocket dimensions are measured from Deck Height.</i>	
Dome Volume:	TBA
Intake Pocket	
Depth:	-.183"
Diameter:	2.000"
Exhaust Pocket	
Depth:	-.183"
Diameter:	2.000"

**Twin Cam 88 Big Bore Sleeves**  
Wiseco Part No: **3209FA** \$106.01 (D1636)

**NEW!** Twin Cam 88 1999-06  
1752cc Big Bore Kit (107 cu. in.)



- Screamin' Eagle ignition module required.
- Big bore cylinders required.
- Cases must be bored to accept big bore cylinders.
- Includes: Forged pistons, rings, retainer clips & chrome piston pins.
- Gasket available as a separate component.
- Skirt coated.

**10.5:1 Compression • Domed**

**Hastings Ring Package: Top Ring .0472" • 2nd Ring .0472" • Oil Ring .118"**

KIT PART NO. \$299.68 (D08971)	CC DISPL.	BORE	STROKE	REPL. PISTON \$149.84 (D0998)	REPL. RING SET \$38.59 (D4822)	REPL. RETAINER CLIP & PISTON PIN	GASKET KIT (Optional)
<b>K1759</b>	1752cc	4.125"/STD	4.000"	4923PS	4127GF	W5752 \$2.00 (D021) S594 \$13.95 (D738)	TBA

**DOMESPECIFICATION**  
*Valve pocket dimensions are measured from Deck Height.*

Dome Volume: -3.7cc  
Intake Pocket  
Depth: -.183"  
Diameter: 2.000"  
Exhaust Pocket  
Depth: -.183"  
Diameter: 2.000"



**Twin Cam 88 1999-06  
1802cc Big Bore Kit  
4 3/8" Stroker (110 cu. in.)**

**"SLEEPER SERIES"**  
*Converts your stock cylinder into a Big Bore*

- Screamin' Eagle ignition module required.
- Big bore cylinder or sleeving required.
- Cases must be bored to accept big bore cylinders.
- Includes: Forged pistons, rings, retainer clips & chrome piston pins.
- Gasket available as a separate component.

**10:1 Compression • Reverse Dome • Skirt Coated**

**Hastings Ring Package: Top Ring .0472" • 2nd Ring .0472" • Oil Ring .118"**

KIT PART NO. \$299.68 (D08971)	CC DISPL.	BORE	STROKE	REPL. PISTON \$149.84 (D0998)	REPL. RING SET \$38.59 (D4822)	REPL. RETAINER CLIP & PISTON PIN	GASKET KIT (Optional) \$66.10 (D6693)
<b>K1745</b>	1802cc	4.000"/STD	4.375"	4871PS	4000GF	W5752 \$2.00 (D021) S594 \$13.95 (D738)	W6274

**DOMESPECIFICATION**  
*Valve pocket dimensions are measured from Deck Height.*

Dome Volume: -7.0cc  
Intake Pocket  
Depth: -.213"  
Diameter: 2.150"  
Exhaust Pocket  
Depth: -.213"  
Diameter: 2.150"

**Twin Cam 88 Big Bore Sleeves**  
Wiseco Part No: **3209FA** \$106.01 (D1636)